



Aldbrough Close, Westlea, Swindon
£70,000

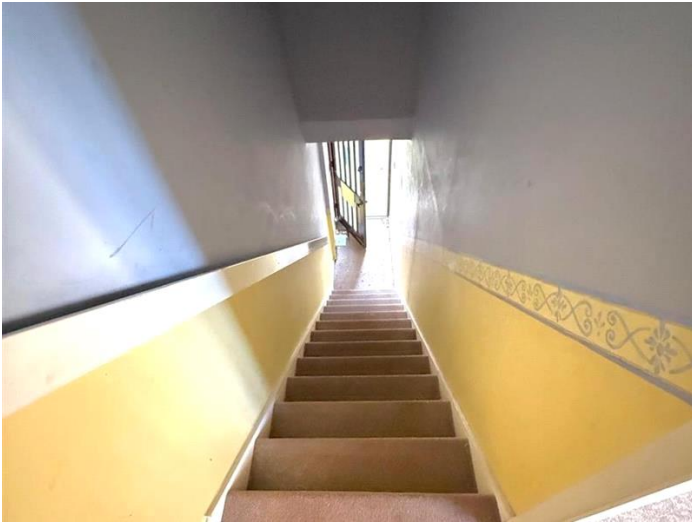
NO ONWARD CHAIN! * Popular West Swindon Location * Cul-De-Sac Position * Close Proximity To

NO ONWARD CHAIN! * Popular West Swindon Location * Cul-De-Sac Position * Close Proximity To Amenities * Superb Access To Junction 16 of the M4 Motorway *

A 1 bedroom maisonette apartment (with its own private access). The accommodation briefly comprises: Entrance porch, stairs rising to the first floor, living space, kitchen area, separate bedroom area and a bathroom. Externally there is a parking space. Viewing is recommended.

Tenure: Leasehold (56 years)
Parking options: Off Street

Amenities * Superb Access To Junction 16 of the M4 Motorway * A 1 bedroom maisonette apartment (with its own private access) & Parking Space | Leasehold



Whilst every effort is made to ensure the accuracy of these details, it should be noted that the measurements are approximate only. Floorplans are for representation purposes only and prepared according to the RICS Code of Measuring Practice by our floorplan provider. Therefore, the layout of doors, windows and rooms are approximate and should be regarded as such by any prospective purchaser. Any internal photographs are intended as a guide only and it should not be assumed that any of the furniture/fittings are included in any sale. Where shown, details of lease, ground rent and service charge are provided by the vendor and their accuracy cannot be guaranteed, as the information may not have been verified and further checks should be made either through your solicitor/conveyance. Where appliances, including central heating, are mentioned, it cannot be assumed that they are in working order, as they have not been tested. Please also note that wiring, plumbing and drains have not been checked.

